



Bottisham
greenway

RESIDENTS INFORMATION EVENING
30 JANUARY 2024

The case for change

Key challenges

Continued growth of traffic and congestion

Limited public transport choices and lack of attractive walking and cycling routes

Toxic air pollution and high carbon emissions as a result of limited alternatives to the car

Objectives



Provide better cycling and walking routes



Enhance public spaces where possible



Reduce the impact of traffic congestion and growing traffic levels



Support access to jobs and opportunities



Reduce air pollution and improve our health

NETWORK OF 12 GREENWAYS



PUBLIC CONSULTATIONS

- 2019 - INITIAL ONLINE PUBLIC CONSULTATION
 - GREENWAY ROUTES THEN APPROVED BY GCP

PUBLIC CONSULTATIONS

- 2019 - INITIAL ONLINE PUBLIC CONSULTATION
 - GREENWAY ROUTES THEN APPROVED BY GCP
- 2023 - F2F & ONLINE STAKEHOLDER ENGAGEMENT
 - REVIEW OF DETAILED PLANS
 - INCLUDING PARISH COUNCILS SUPPORTED BY COUNTY/DISTRICT COUNCILLORS



Bottisham
greenway

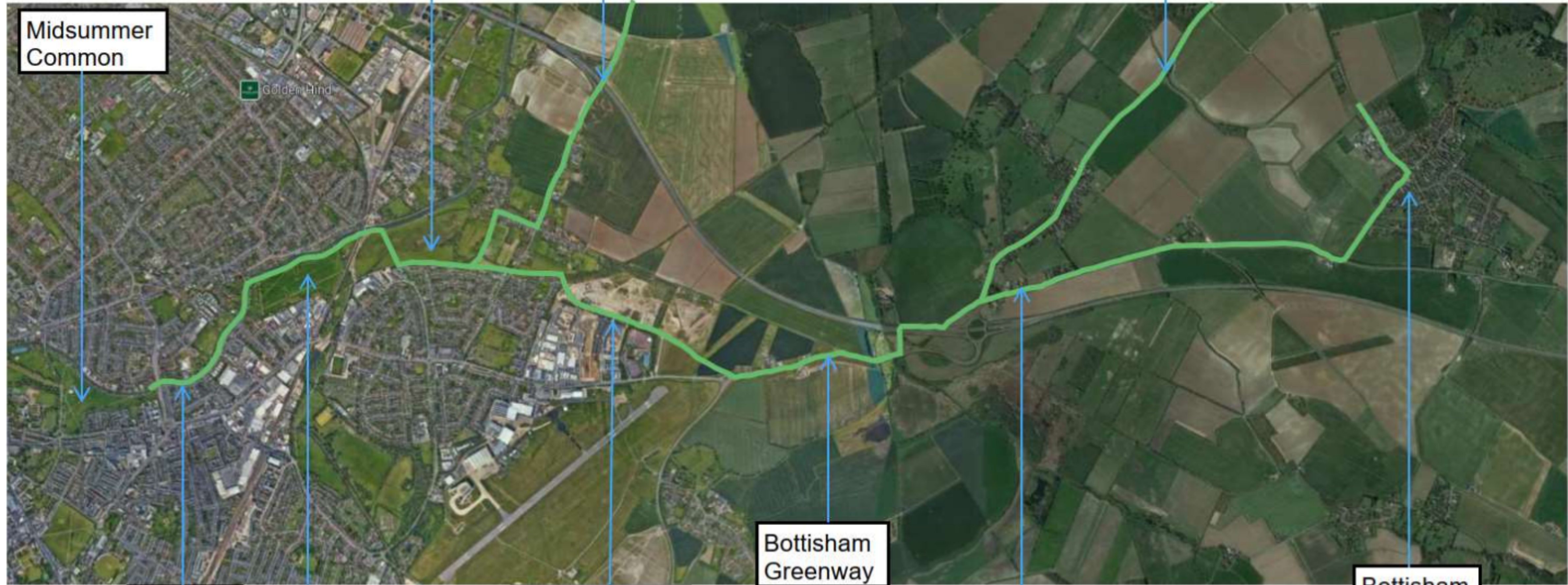


GREATER
CAMBRIDGE
PARTNERSHIP

Ditton
Meadows

Horningsea
Greenway

Swaffhams
Greenway



Midsummer
Common

Riverside

Stourbridge
Common

Marleigh
Development

Bottisham
Greenway

Newmarket Road

Bottisham
Village





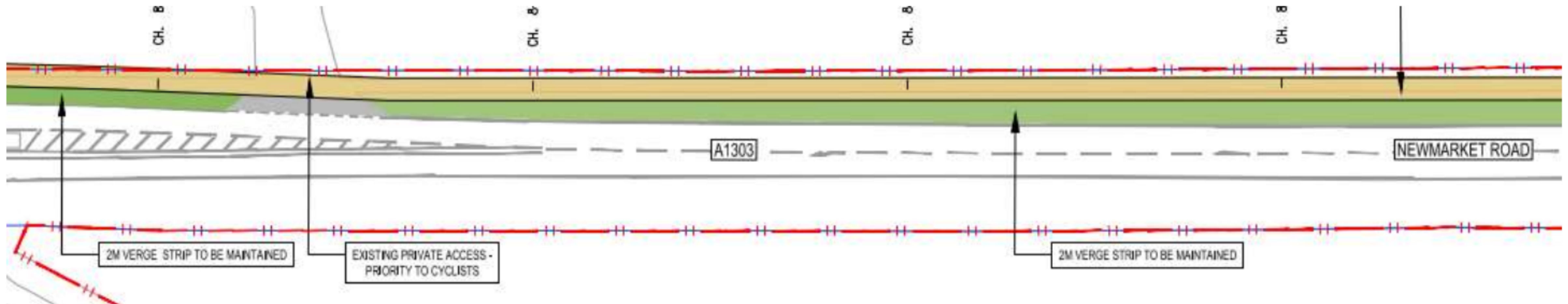
Newmarket Road

Challenges & Opportunities:

- Available width to upgrade and improve existing path
- High traffic speeds

Proposal:

- 3m shared use path (subject to topographical survey and site constraints).
- Improved maintenance of existing vegetation to improve access and visibility.
- Continuous path across driveways





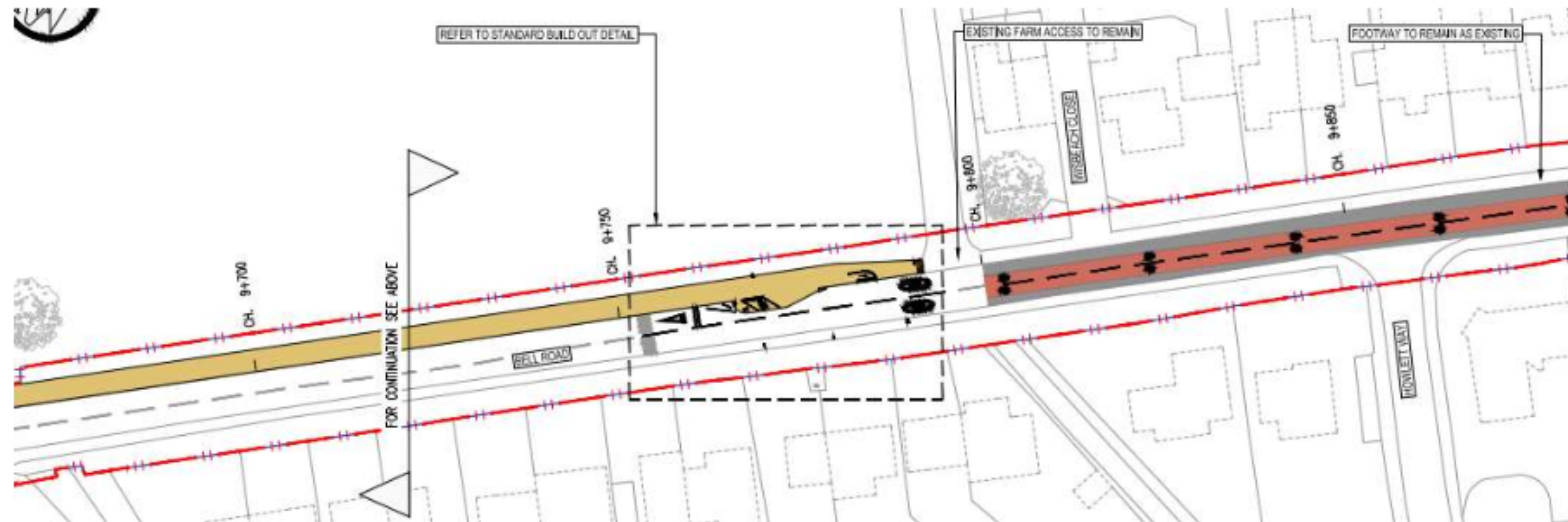
Bell Road

Challenges & Opportunities:

- Physical constraints (i.e. trees and overhead utilities)
- Proximity to pumping station

Proposal:

- Widening of existing shared use path to 3m where applicable
- Buildout to allow safe transition for cyclists on/off carriageway
- Quiet street environment from buildout into Bottisham



**NO RED TARMAC
IN LATEST PLAN**

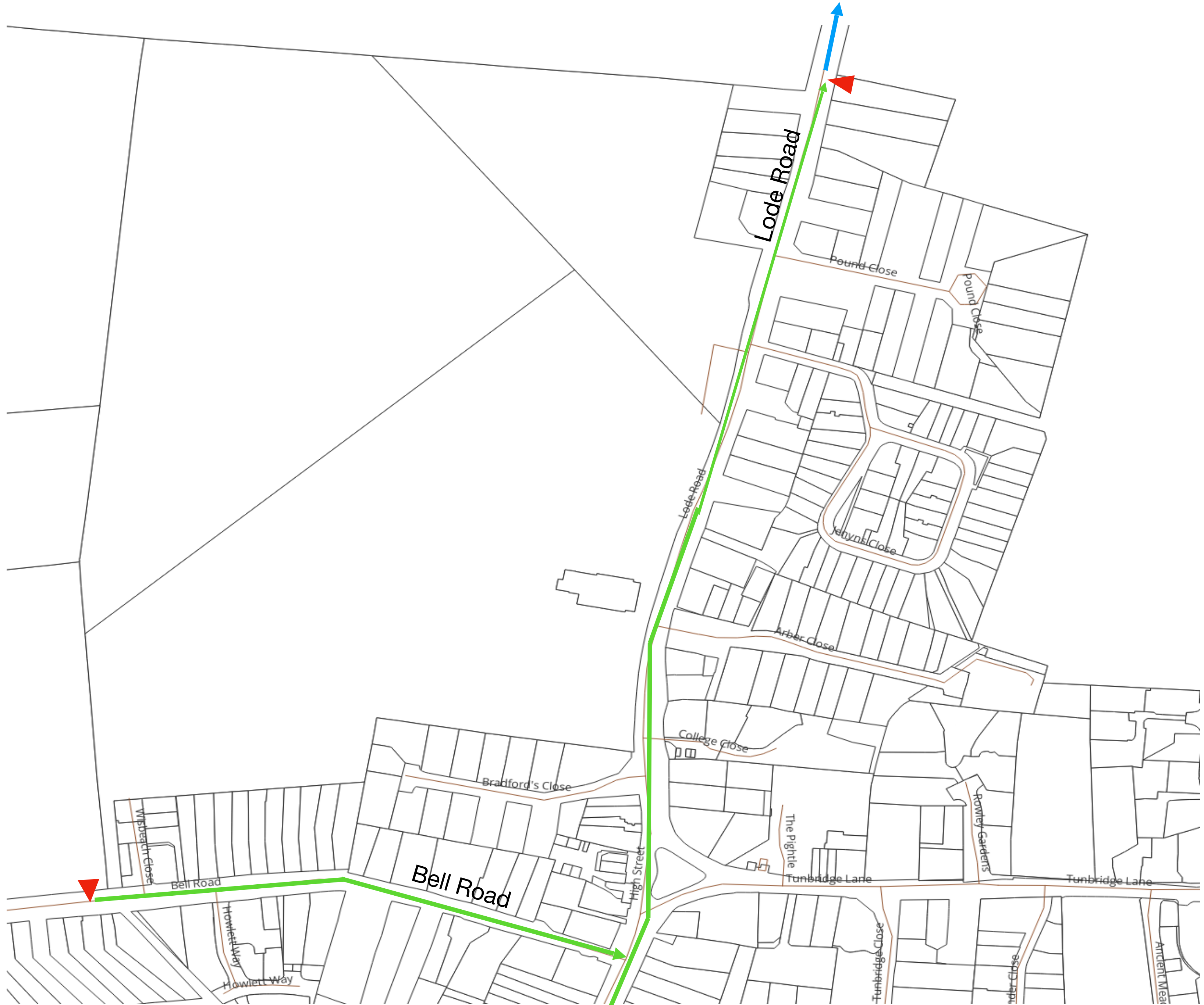


30 MPH REDUCED TO 20 MPH



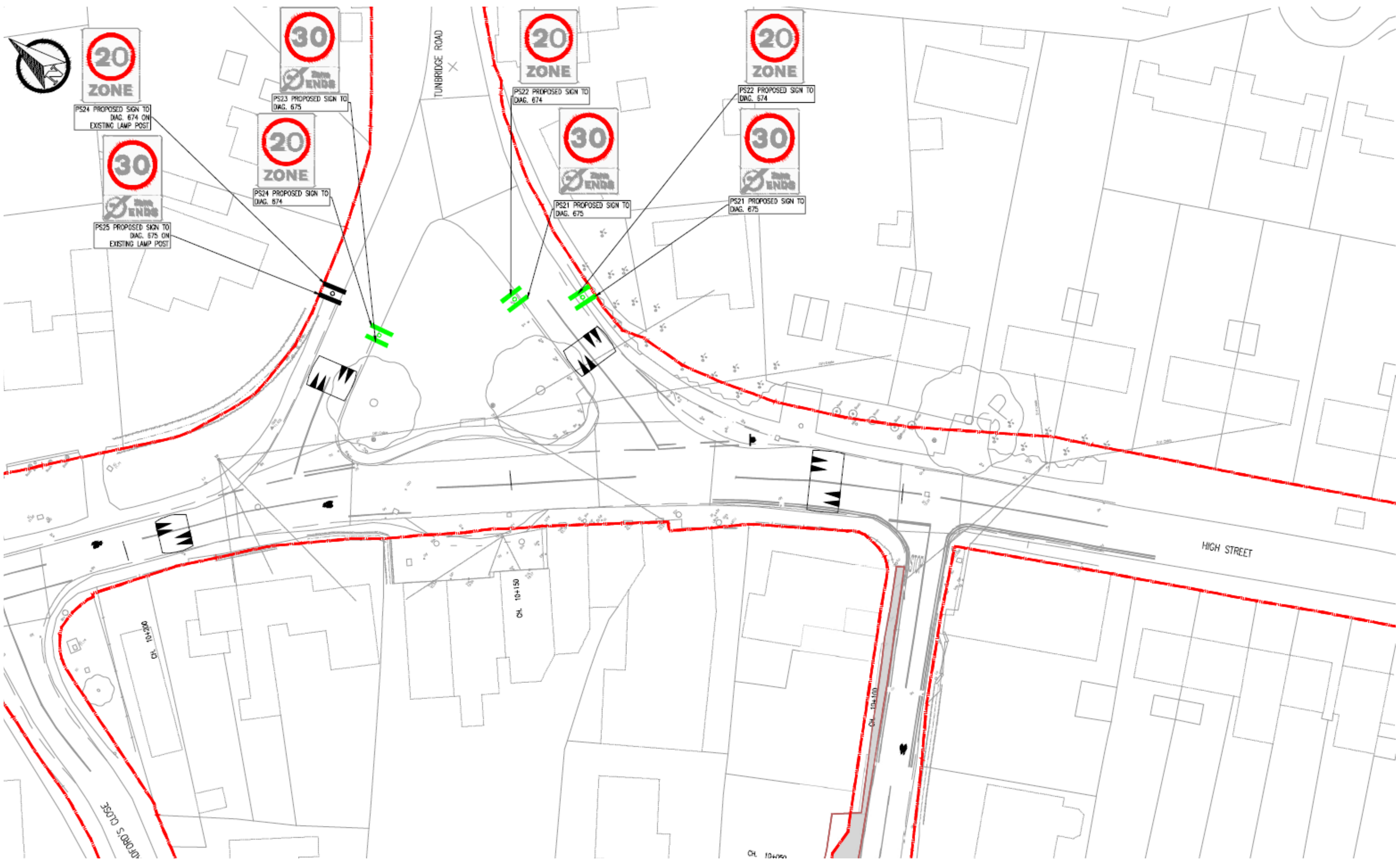
40 MPH REDUCED TO 30 MPH

▶ BUILD OUT



GREENWAY COMMENCES AT ENTRANCE TO BEECHWOOD AVE

CURRENT OPTIONS FOR TRIANGLE



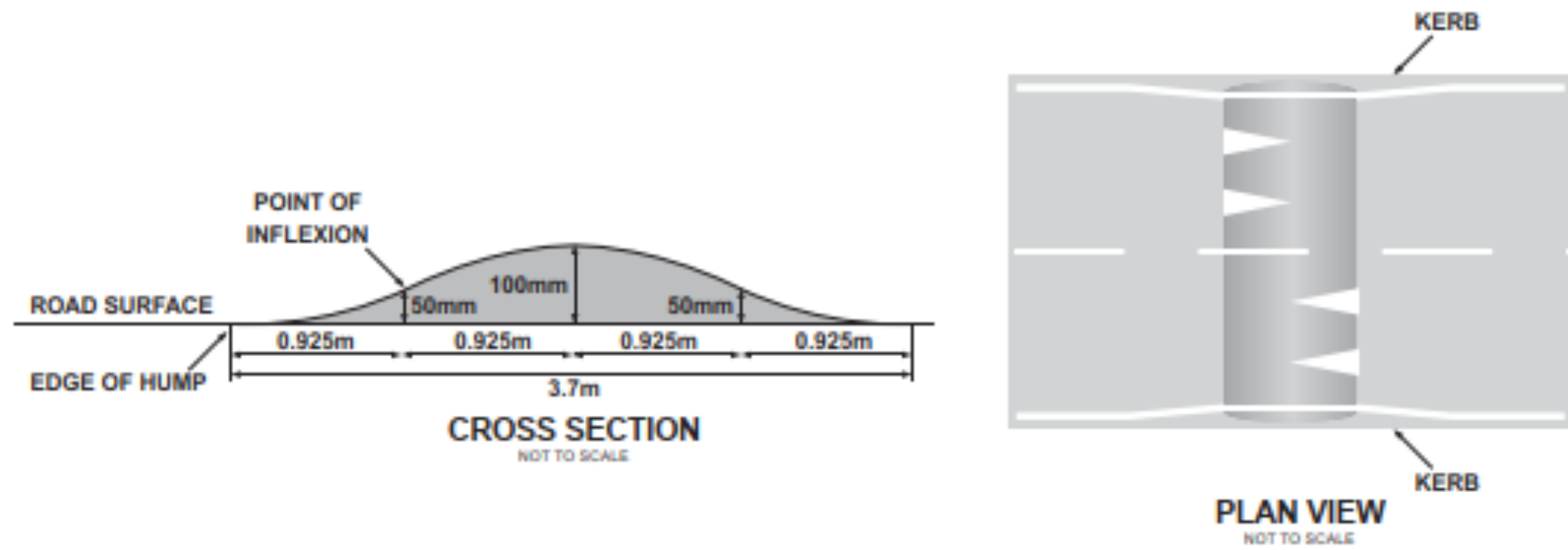


Fig 4.7 Cross-section and plan view of a sinusoidal hump



TUNBRIDGE ROAD

PROPOSED PLANTERS

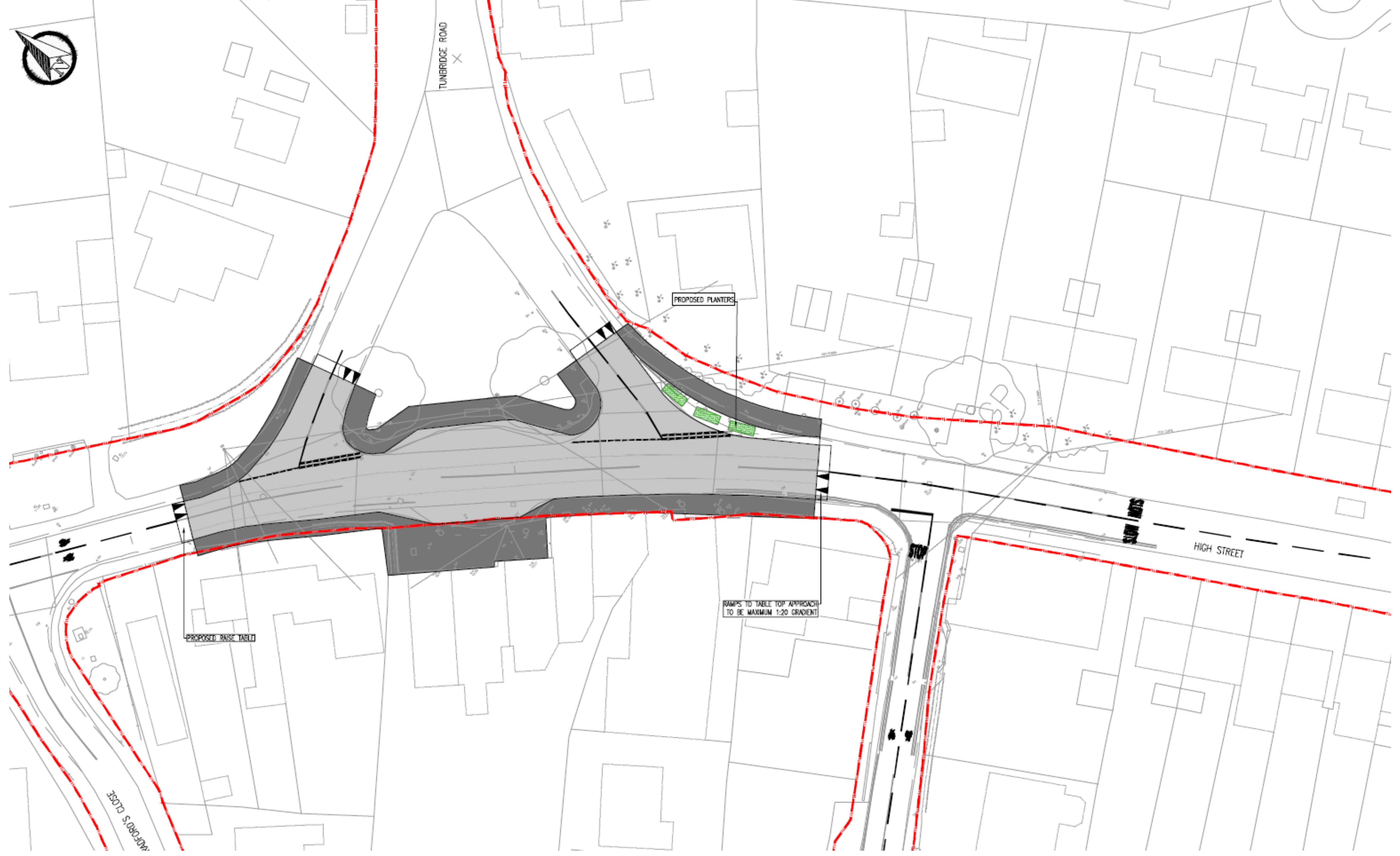
PROPOSED BASE TABLE

RAMPS TO TABLE TOP APPROACH
TO BE MAXIMUM 1:20 GRADIENT

SLOW LANE

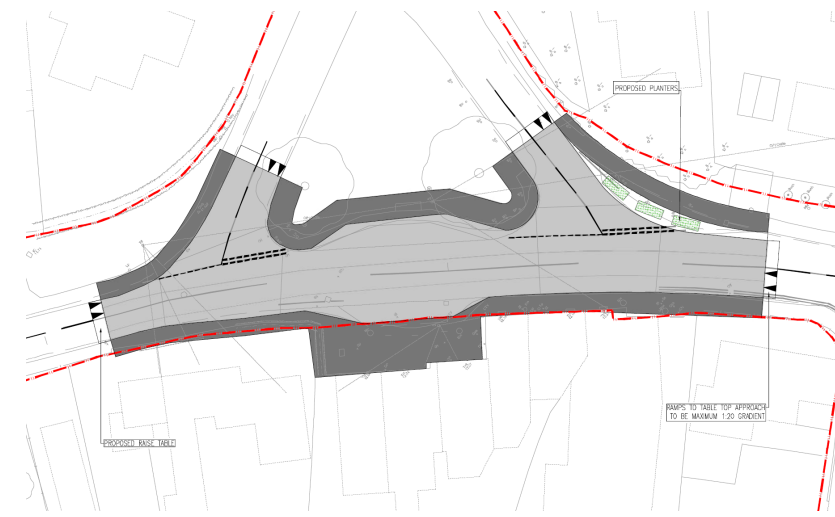
HIGH STREET

MORRIS'S CLOSE

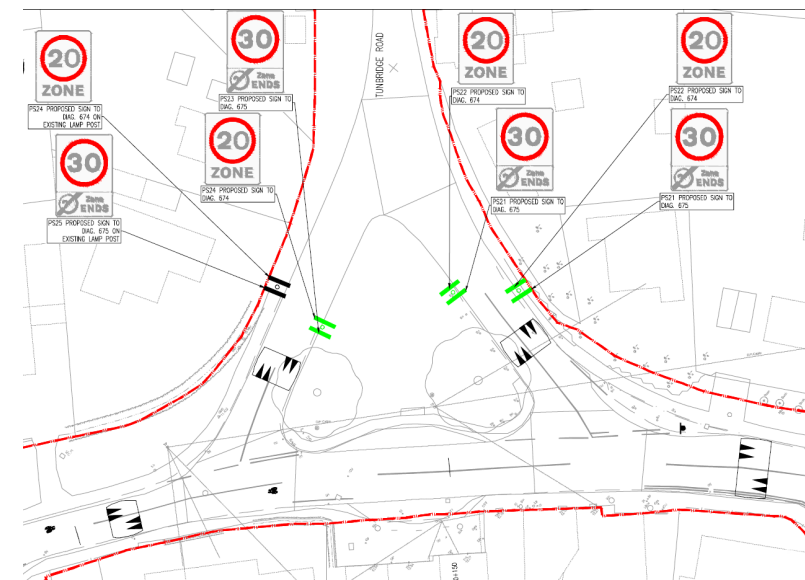


GREENWAY OPTIONS

- RAISED ASPHALT TABLE
(4 WEEKS CONSTRUCTION?)



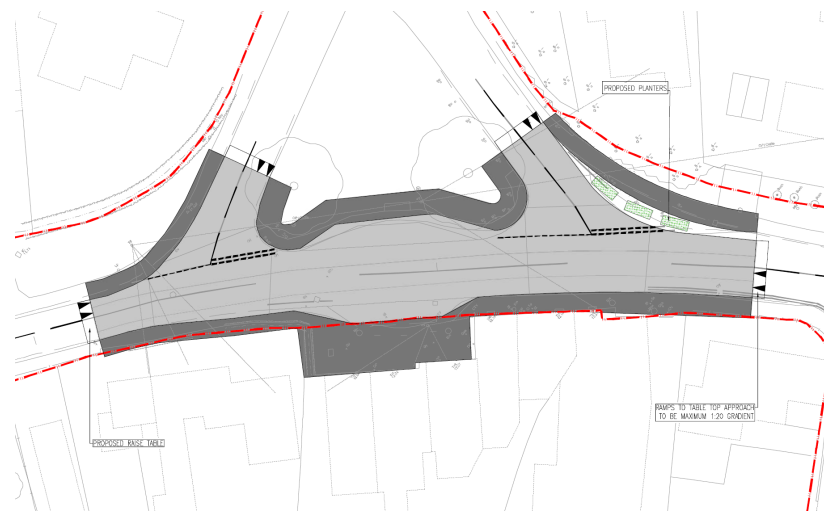
- SPEED CUSHIONS
(2 WEEKS CONSTRUCTION?)



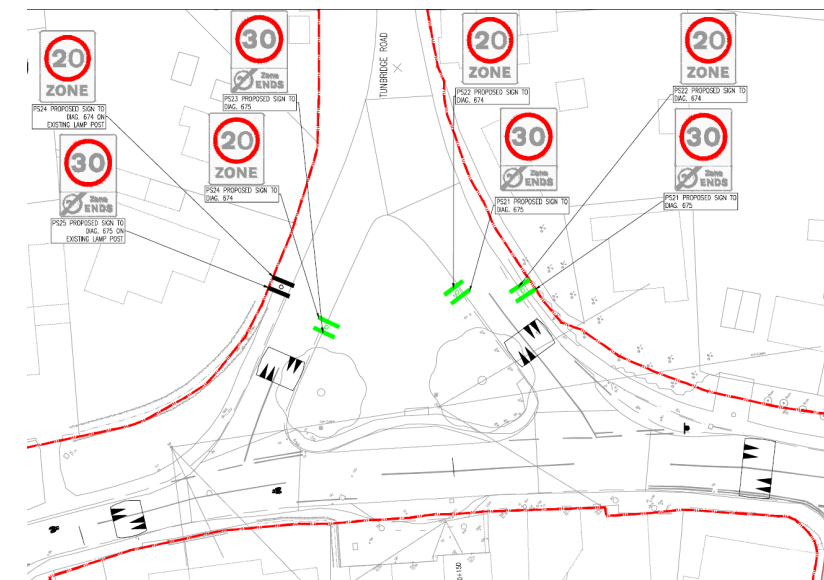
- GREENWAY ENDS IN BELL ROAD
 - TERMINATION POINT TO BE AGREED WITH GCP

FEEDBACK FORM

- RAISED ASPHALT TABLE
(4 WEEKS CONSTRUCTION?)



- SPEED CUSHIONS
(2 WEEKS CONSTRUCTION?)



- GREENWAY ENDS IN BELL ROAD
 - TERMINATION POINT TO BE AGREED WITH GCP

PLEASE WRITE IN YOUR PREFERENCE FOR THE OPTIONS E.G.

1 = MOST PREFERRED

2 = NEXT PREFERRED

3 = LEAST PREFERRED

PLEASE FEEDBACK NOW OR AT CO-OP FEEDBACK BOX BY END FRIDAY 2 FEB



Bottisham
greenway

RESIDENTS INFORMATION EVENING
30 JANUARY 2024